

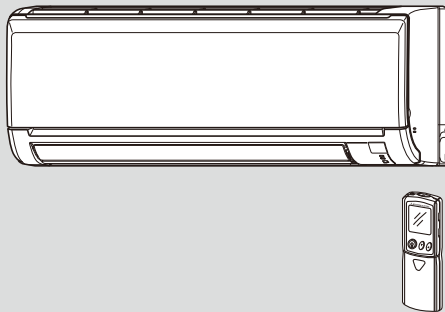
SPLIT-TYPE AIR CONDITIONERS

# INDOOR UNIT PARTS CATALOG

**No. OBB621**  
**REVISED EDITION-C**

## Models

- MS-GF20VA** - E1
- MS-GF25VA** - E1
- MS-GF35VA** - E1
- MS-GF50VA** - E1
- MS-GF60VA** - E1
- MS-GF80VA** - E1



## CONTENTS

- 1. SERVICE PARTS LIST ..... 2
- 2. OPTIONAL PARTS ..... 10

**SERVICE MANUAL (OBH621)**

**Revision A:**

- MS-GF50VA- [E1], MS-GF60VA- [E1] and MS-GF80VA- [E1] have been added.

**Revision B:**

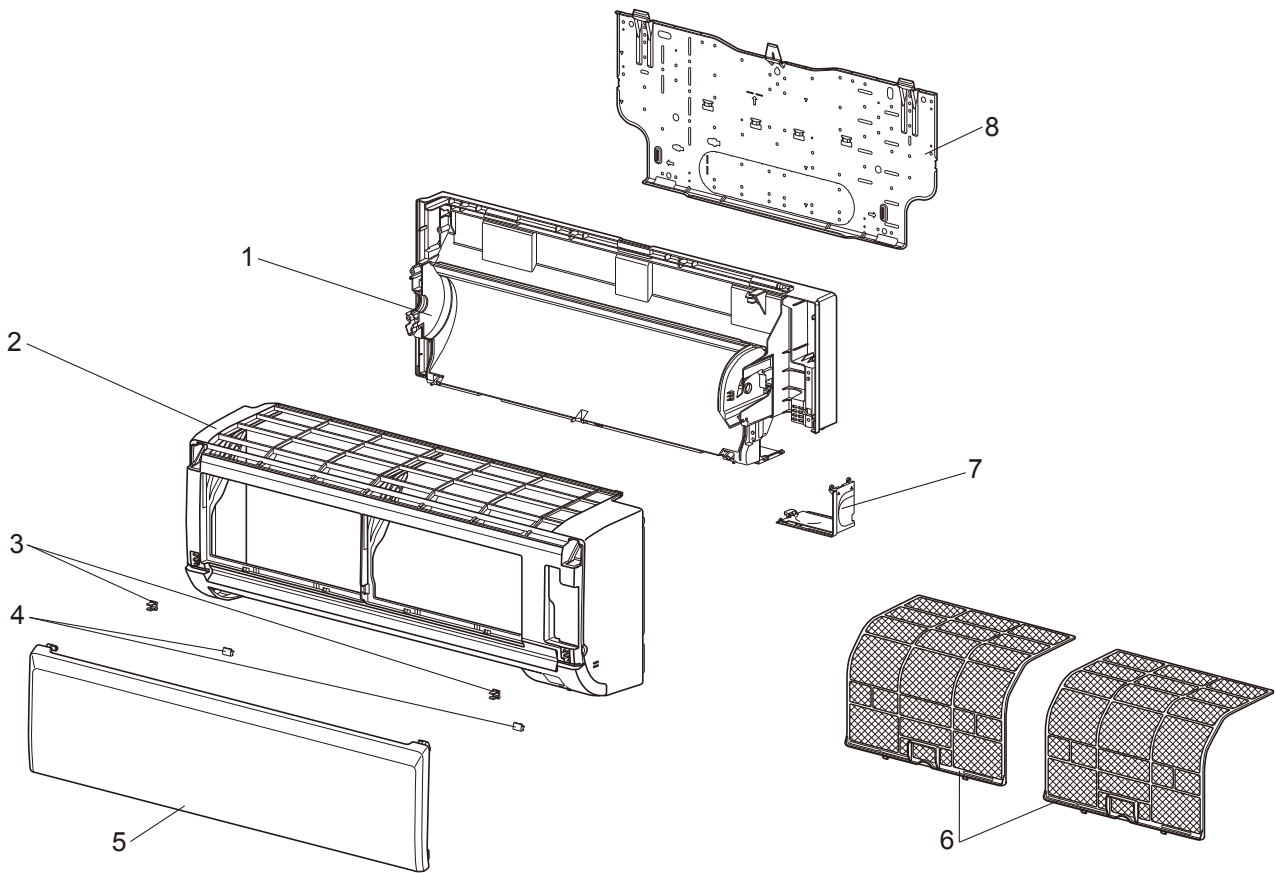
- Part numbers of the electronic control P.C. boards for MS-GF60VA- [E1] and MS-GF80VA- [E1] have been changed.

**Revision C:**

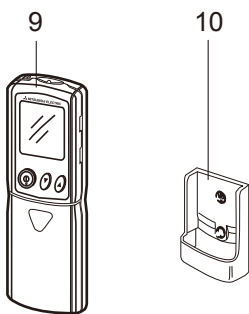
- Some descriptions have been modified.

**1 SERVICE PARTS LIST**

**MS-GF20VA MS-GF25VA MS-GF35VA**  
**1-1. INDOOR UNIT STRUCTURAL PARTS**



**1-2. ACCESSORY AND REMOTE CONTROLLER**





### 1-1. INDOOR UNIT STRUCTURAL PARTS

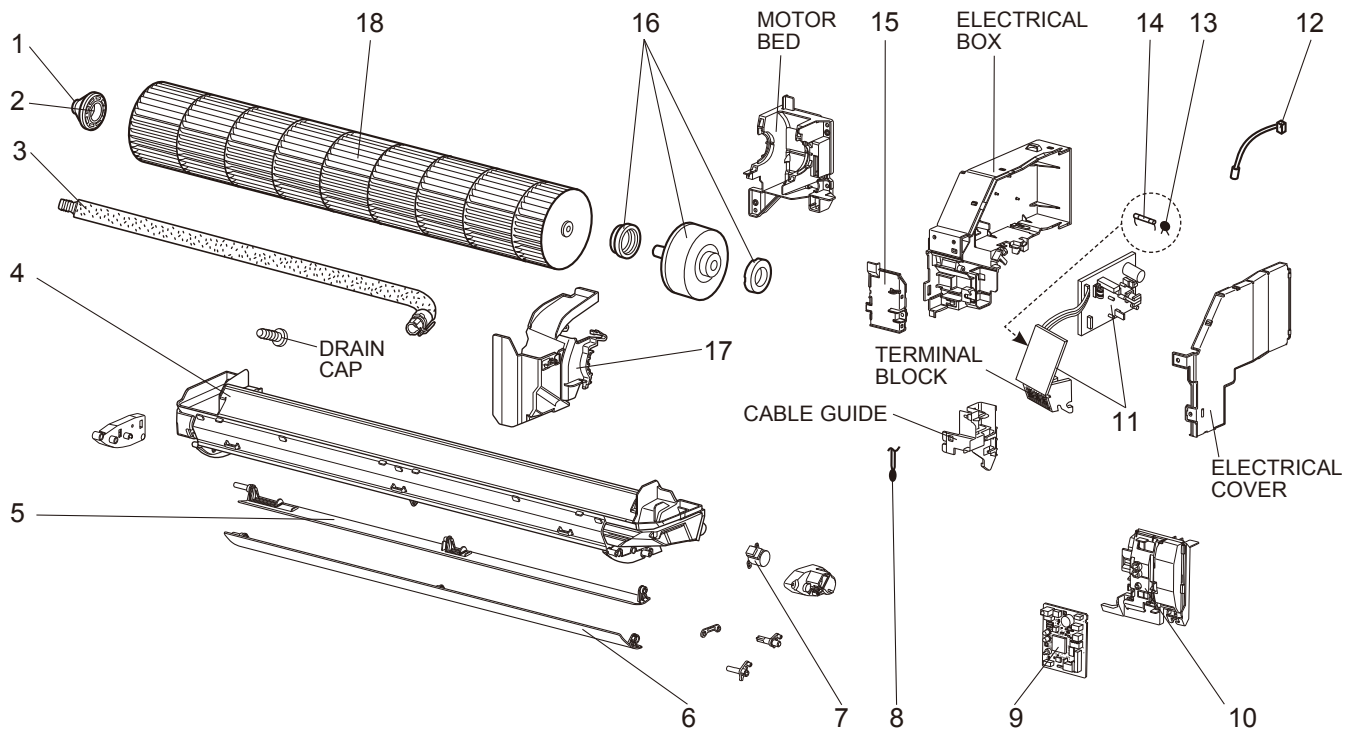
No.	Part No.	Part name	Symbol in Wiring Diagram	Q'ty/unit			Remarks
				MS-GF 20VA - <span style="border: 1px solid black; padding: 0 2px;">E1</span>	MS-GF 25VA - <span style="border: 1px solid black; padding: 0 2px;">E1</span>	MS-GF 35VA - <span style="border: 1px solid black; padding: 0 2px;">E1</span>	
1	E22 F89 234	BOX ASSEMBLY		1	1	1	
2	E22 X84 000	PANEL ASSEMBLY		1	1	1	Includes No. 3, 4 and 5
3	E22 408 142	CATCH		2	2	2	2 PCS/SET
4	E22 913 067	SCREW CAP		2	2	2	2 PCS/SET
5	E22 X84 010	FRONT PANEL		1	1	1	
6	E22 F63 100	NANO PLATINUM FILTER		2	2	2	1 PC/SET
7	E22 D68 975	CORNER BOX (RIGHT)		1	1	1	
8	E22 D68 970	INSTALLATION PLATE		1	1	1	

### 1-2. ACCESSORY AND REMOTE CONTROLLER

No.	Part No.	Part name	Symbol in Wiring Diagram	Q'ty/unit			Remarks
				MS-GF 20VA - <span style="border: 1px solid black; padding: 0 2px;">E1</span>	MS-GF 25VA - <span style="border: 1px solid black; padding: 0 2px;">E1</span>	MS-GF 35VA - <span style="border: 1px solid black; padding: 0 2px;">E1</span>	
9	E22 R17 426	REMOTE CONTROLLER		1	1	1	KM12A
10	E22 527 083	REMOTE CONTROLLER HOLDER		1	1	1	

**MS-GF20VA MS-GF25VA MS-GF35VA**

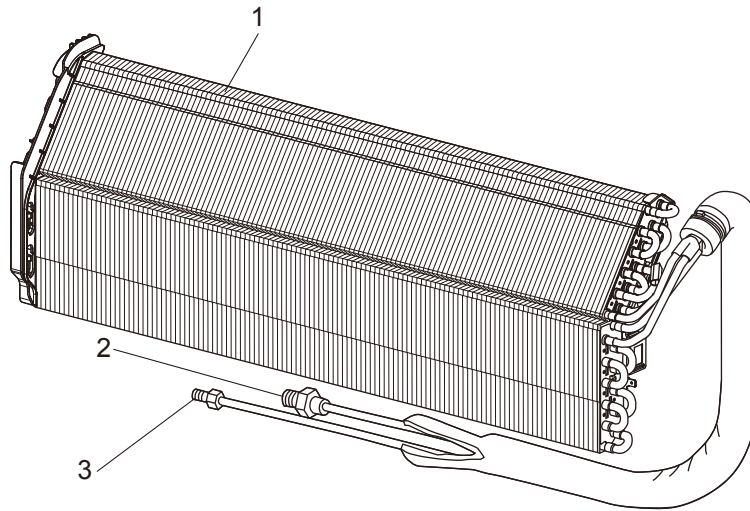
**1-3. INDOOR UNIT ELECTRICAL PARTS AND FUNCTIONAL PARTS**



**1-3. INDOOR UNIT ELECTRICAL PARTS AND FUNCTIONAL PARTS**

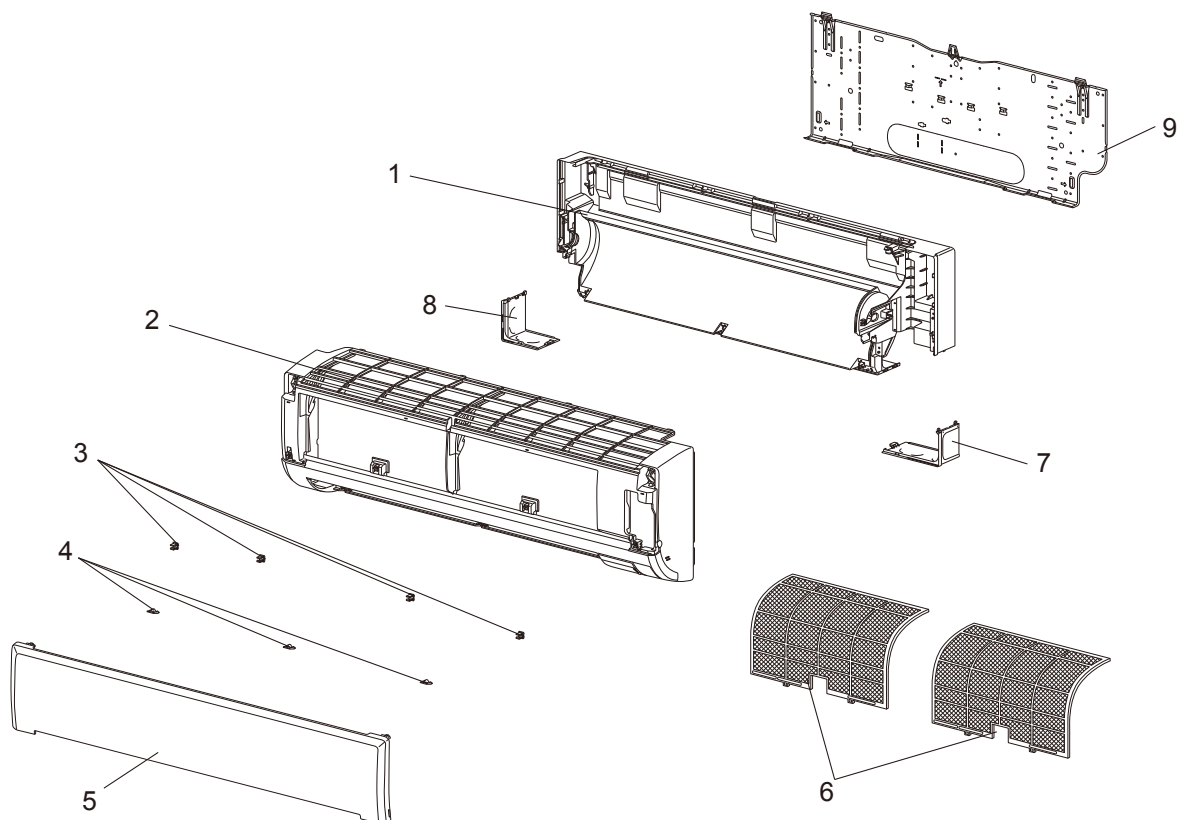
No.	Part No.	Part name	Symbol in Wiring Diagram	Q'ty/unit			Remarks
				MS-GF 20VA - [E1]	MS-GF 25VA - [E1]	MS-GF 35VA - [E1]	
1	E22 751 509	BEARING MOUNT		1	1	1	
2	E22 001 504	SLEEVE BEARING		1	1	1	
3	E22 P72 702	DRAIN HOSE		1	1	1	
4	E22 H07 235	NOZZLE ASSEMBLY		1	1	1	
5	E22 F87 040	VANE (UPPER)		1	1	1	
6	E22 F87 041	VANE (LOWER)		1	1	1	
7	E22 A89 303	VANE MOTOR	MV	1	1	1	UP & DOWN
8	E22 D68 308	ROOM TEMPERATURE THERMISTOR	RT11	1	1	1	
9	E22 H07 452	INDOOR ELECTRONIC CONTROL P.C. BOARD		1	1		
	E22 H08 452	CONTROL P.C. BOARD				1	
10	E22 F87 095	INDOOR ELECTRONIC CONTROL P.C. BOARD HOLDER		1	1	1	
11	E22 H07 440	POWER P.C. BOARD		1	1	1	Includes TERMINAL BLOCK with TERMINAL P.C. BOARD
12	E22 54B 307	INDOOR COIL THERMISTOR	RT12	1	1	1	
13	E22 B75 385	VARISTOR	NR11	1	1	1	
14	E22 A49 382	FUSE	F11	1	1	1	T3.15AL250V
15	E22 F87 784	V.A. CLAMP		1	1	1	
16	E22 H07 300	INDOOR FAN MOTOR	MF	1	1	1	RC4V18-□□ Includes FAN MOTOR RUBBER MOUNT (2 PCS/SET)
17	E22 D68 333	MOTOR BAND		1	1	1	
18	E22 A89 302	LINE FLOW FAN		1	1	1	

**MS-GF20VA MS-GF25VA MS-GF35VA  
1-4. INDOOR UNIT HEAT EXCHANGER**



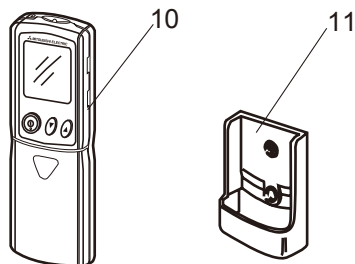
No.	Part No.	Part name	Symbol in Wiring Diagram	Q'ty/unit			Remarks
				MS-GF 20VA - [E1]	MS-GF 25VA - [E1]	MS-GF 35VA - [E1]	
1	E22 H07 620	INDOOR HEAT EXCHANGER		1	1		
	E22 H08 620					1	
2	E22 815 666	UNION (GAS)		1	1	1	ø9.52
3	E22 C32 667	UNION (LIQUID)		1	1		ø6.35
	E22 C68 667					1	ø6.35

**MS-GF50VA MS-GF60VA MS-GF80VA**  
**1-5. INDOOR UNIT STRUCTURAL PARTS**



No.	Part No.	Part name	Symbol in Wiring Diagram	Q'ty/unit			Remarks
				MS-GF			
				50VA-[E1]	60VA-[E1]	80VA-[E1]	
1	E22 H09 234	BOX ASSEMBLY		1	1	1	
2	E22 H09 000	PANEL ASSEMBLY		1	1	1	Includes No. 3, 4 and 5
3	E22 408 142	CATCH		4	4	4	4 PCS/SET
4	E22 F28 067	SCREW CAP		3	3	3	3 PCS/SET
5	E22 R19 010	FRONT PANEL		1	1	1	
6	E22 F28 100	NANO PLATINUM FILTER		2	2	2	1 PC/SET
7	E22 F28 975	CORNER BOX (RIGHT)		1	1	1	
8	E22 F28 976	CORNER BOX (LEFT)		1	1	1	
9	E22 F28 970	INSTALLATION PLATE		1	1	1	

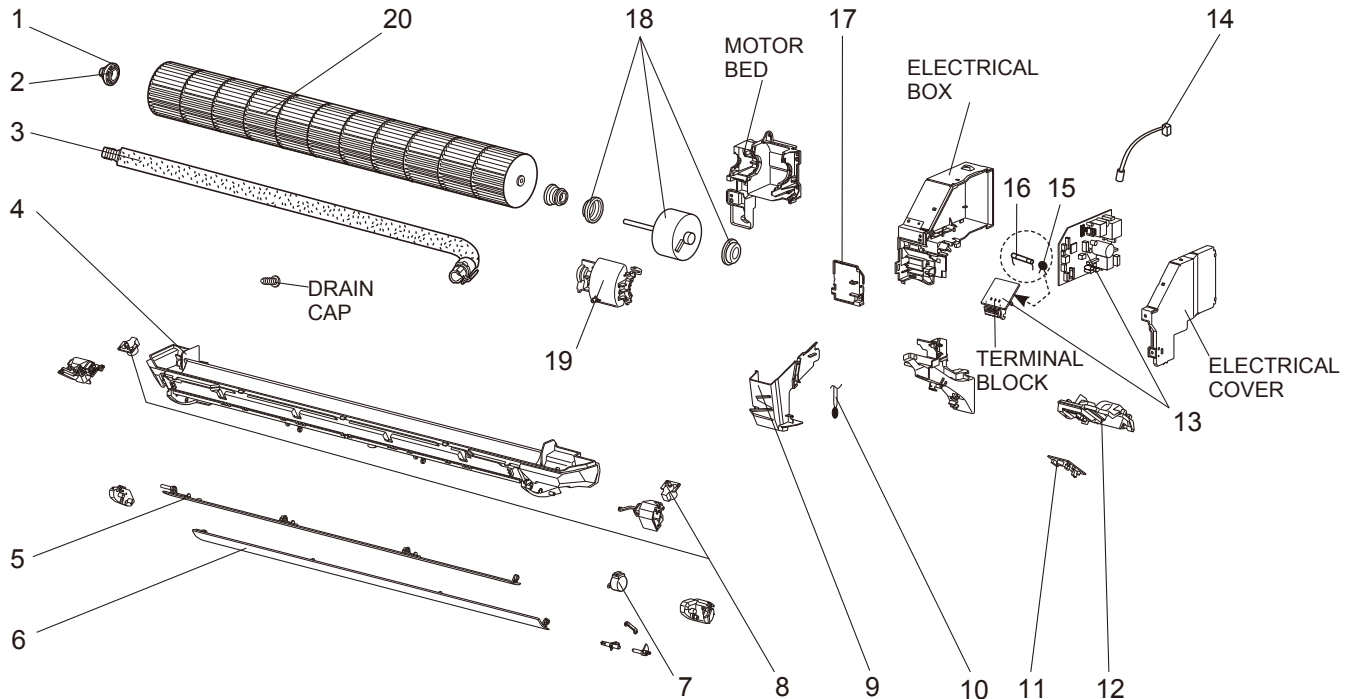
**1-6. ACCESSORY AND REMOTE CONTROLLER**



No.	Part No.	Part name	Symbol in Wiring Diagram	Q'ty/unit			Remarks
				MS-GF			
				50VA-[E1]	60VA-[E1]	80VA-[E1]	
10	E22 R19 426	REMOTE CONTROLLER		1	1	1	KM12B
11	E22 527 083	REMOTE CONTROLLER HOLDER		1	1	1	

MS-GF50VA MS-GF60VA MS-GF80VA

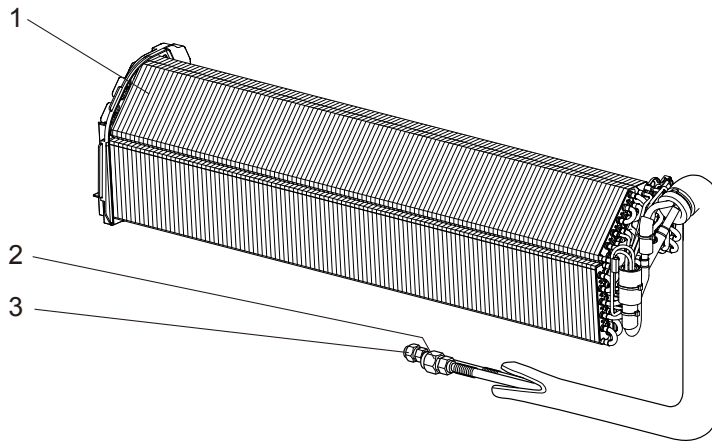
1-7. INDOOR UNIT ELECTRICAL PARTS AND FUNCTIONAL PARTS



No.	Part No.	Part name	Symbol in Wiring Diagram	Q'ty/unit			Remarks
				MS-GF			
				50VA-[E1]	60VA-[E1]	80VA-[E1]	
1	E22 751 509	BEARING MOUNT		1	1	1	
2	E22 001 504	SLEEVE BEARING		1	1	1	
3	E22 T207 702	DRAIN HOSE		1	1	1	
4	E22 H09 235	NOZZLE ASSEMBLY		1	1	1	
5	E22 F76 040	VANE (UPPER)		1	1	1	
6	E22 F76 041	VANE (LOWER)		1	1	1	
7	E22 C33 303	VANE MOTOR (HORIZONTAL)	MV1	1	1	1	UP & DOWN
8	E22 C32 303	VANE MOTOR (VERTICAL)	MV2	2	2	2	RIGHT & LEFT
9	E22 F28 541	WATER CUT		1	1	1	
10	E22 C32 308	ROOM TEMPERATURE THERMISTOR	RT11	1	1	1	
11	E22 F28 468	POWER MONITOR RECEIVER SW P.C. BOARD		1	1	1	
12	E22 F28 095	POWER MONITOR RECEIVER HOLDER		1	1	1	
13	E22 H09 452	ELECTRONIC CONTROL P.C. BOARD		1			Includes TERMINAL BLOCK with TERMINAL P.C. BOARD
	E22 N80 452			1			
	E22 N81 452				1		
14	E22 12B 307	INDOOR COIL THERMISTOR	RT12	1	1	1	
15	E22 B75 385	VARISTOR	NR11	1	1	1	
16	E22 A49 382	FUSE	F11	1	1	1	T3.15AL250V
17	E22 F28 784	V.A. CLAMP		1	1	1	
18	E22 F28 300	INDOOR FAN MOTOR	MF	1	1	1	RC0J56-□□ Includes FAN MOTOR RUBBER MOUNT (2 PCS/SET)
19	E22 F28 333	MOTOR BAND		1	1	1	
20	E22 F28 302	LINE FLOW FAN		1	1	1	



**MS-GF50VA MS-GF60VA MS-GF80VA**  
**1-8. INDOOR UNIT HEAT EXCHANGER**



No.	Part No.	Part name	Symbol in Wiring Diagram	Q'ty/unit			Remarks
				MS-GF			
				50VA-[E1]	60VA-[E1]	80VA-[E1]	
1	E22 H09 620	INDOOR HEAT EXCHANGER		1			
	E22 H10 620				1		
	E22 H11 620					1	
2	E22 179 667	UNION (GAS)		1			ø12.7
	E22 527 666				1	1	ø15.88
3	E22 151 667	UNION (LIQUID)		1	1		ø6.35
	E22 151 666					1	ø9.52

# 2 OPTIONAL PARTS

## 2-1. AIR CLEANING FILTER (ELECTROSTATIC ANTI-ALLERGY ENZYME FILTER)

Every 3 months:

- Remove dirt by a vacuum cleaner.

**When dirt cannot be removed by vacuum cleaning:**

- Soak the filter and its frame in lukewarm water before rinsing it.
- After washing, dry it well in shade. Install all tabs of the air filter.

Every year:

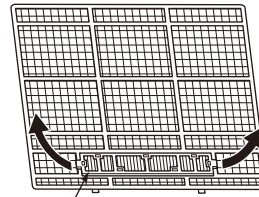
- Replace it with a new air cleaning filter for best performance.

**NOTE 1:** Clean the filters regularly for best performance and to reduce power consumption.

**NOTE 2:** Dirty filters cause condensation in the air conditioner which will contribute to the growth of fungi such as mold. It is therefore recommended to clean air filters every 2 weeks.

Model	Part No.
MS-GF20VA	MAC-2320FT
MS-GF25VA	
MS-GF35VA	

Pull to remove from the air filter



Air cleaning filter  
(Electrostatic anti-allergy enzyme filter)

Model	Part No.
MS-GF50VA	MAC-2310FT-E
MS-GF60VA	
MS-GF80VA	



Air cleaning filter  
(Electrostatic anti-allergy enzyme filter)

# MITSUBISHI ELECTRIC CORPORATION

HEAD OFFICE: TOKYO BUILDING, 2-7-3, MARUNOUCHI, CHIYODA-KU, TOKYO 100-8310, JAPAN

© Copyright 2012 MITSUBISHI ELECTRIC CORPORATION

Issued: Jul. 2019. No. OBB621 REVISED EDITION-C

Issued: May 2014. No. OBB621 REVISED EDITION-B

Issued: Feb. 2013. No. OBB621 REVISED EDITION-A

Published: Oct. 2012. No. OBB621

Made in Japan

Specifications are subject to change without notice.